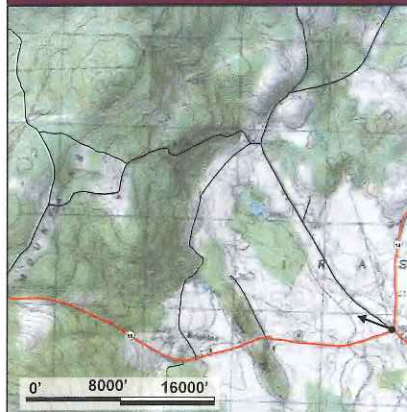




Existing Conditions Photograph



View Location Map



Simulation Information

Turbine Information	Model: TBD	
	Hub height: 295.3' (90 m)	
	Rotor diameter: 397' (121 m)	
	Overall turbine height: 493.8' (150.5 m)	
Photograph Information	Date and time: 06/25/15, 6:12 pm	Weather conditions: Partly sunny
	Location: Junction of VT Route 14/VT Route 58/Back Coventry Road (44°48'57.20"N, 72°17'44.79"W)	
	Camera elevation above sea level: 878ft (268m)	
	Simulation viewing distance: N/A	Focal length (35mm equivalent): 43
	Distance to nearest visible turbine: 2.75 miles Furthest visible turbine: 2.78 miles	
Technical Information	Software: ArcGIS ArcMap 10; Nemetschek VectorWorks 2015; SketchUp Pro 8; Adobe Photoshop CS5	
	Digital elevation data source: USGS National Elevation Dataset (NED) 1/3 arc-second	

NOTES:
 1. This visual simulation is based on GIS data available at the time from USGS National Elevation Data Set and Vera Renewables. Data is only as accurate as the original source and is not guaranteed by LandWorks.

