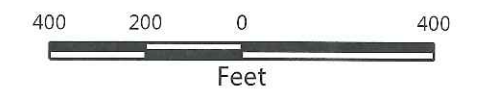


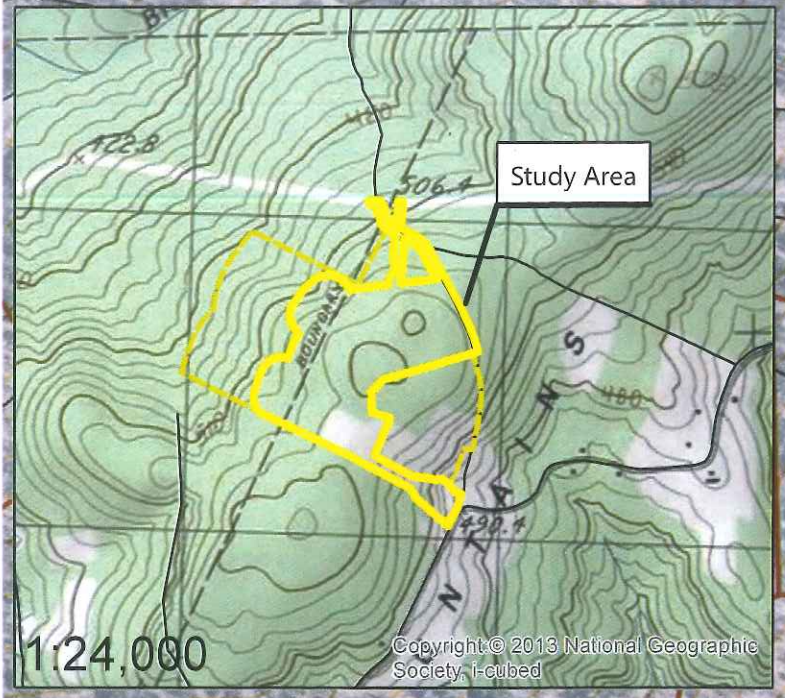
Kidder Hill Wind Project Lowell and Irasburg, VT Natural Resource Map

DRAFT: October 19, 2016



Wetlands and waters delineated by VHB (M. Jackman, O. McEnroe, C. Fenner, A. Crary.) on 09/13/16, 11/04/15, 11/02/15, 10/02/14. Initial field review done by USACE on 07/30/15 and VT DEC on 09/29/15.

VHB Study Area
Approximately 67 Acres
72°20'53.771"W 44°50'0.025"N



Legend

- VHB Study Area
- Recon Area (VHB)
- Recon Wetlands (VHB)
- Delineated Wetlands (VHB)
- Stream (VHB)
- Recon Stream (VHB)
- Proposed Class II Wetland Buffer (50ft.) (VHB)
- Proposed 50' Riparian Buffer (VHB)
- Wetland Delineation Datapoint (VHB)
- Bear-scarred Beech (VHB)
- Bear Mast Habitat (VT FWD)*
- Bear Wetland Feeding (VT FWD)*
- Bear Crossing (VT FWD)*
- VSWI Wetland (VT ANR)*
- NHI Element Occurrences (VT FWD)*
- Soil Boundary (NRCS)
- Surface Water Protection Area (VT ANR)*
- Ground Water Protection Area (VT ANR)*
- Deer Wintering Area (VT FWD)*
- River Corridors (VT ANR)*
- Parcel Boundary (VCGI)
- Town Boundary (K&L)
- Town Boundary (VCGI)
- Road
- 10 ft. Contour
- 50 ft. Contour

*Feature does not occur within map extent

Sources: Background Orthimagery by ArcGIS Online (2013); Roads from VTrans (2012); NHI Element Occurrences, Surface Water Protection Area, Ground Water Protection Area, and Deer Wintering Area, and bear data by ANR (2013); Contours generated from HydroDEM by VCGI (2009); Streams by VHD (2010); Soil Boundary by NRCS (2008); VSWI Wetlands by ANR (2010); Study area, wetlands, streams datapoints, bear-scarred beech, and wetland buffers by VHB (2014-2016); Parcel and town boundary data from VHB (2010); Property Line from Krebs & Lansing drawing Kidder Hill Base-lowell-side (10-21-15).

Source: Esri, DigitalGlobe, GeoEye, Earthstar Geographics, CNES/Airbus DS, USDA, USGS, AEX, Getmapping, Aerogrid, IGN, IGP, swisstopo, and the GIS User Community

